

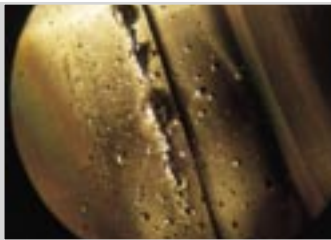
# EXTENDABLE BORESCOPES

## Extend your inspection capabilities

Extendable endoscopes with lamp illumination are used for inspections where the instrument must be very long and high levels of illumination are required. Their modular design allows easy transportation of the endoscope as well as easy and fast assembly.



▼ Structural survey of a steel box-girder railroad bridge



▼ Gas-wash damage in barrel of heavy artillery gun



▼ Inspecting a tubed heat exchanger

## Typical Applications

- Pressure vessels
- Tubes
- Boiler and condenser tubes
- Large diesel engines
- Helicopter blades
- Structural inspection
- Chemical plants
- Weapon systems

By using extension tubes, lengths up to 30,000 mm (1181 in.) are possible. The interchangeable objective heads carry compact and powerful low voltage halogen lamps. Because the illumination source is integral with the objective head, the most efficient illumination of the inspection area is ensured. Once a diameter is selected, you have the ability to modify the instrument for length, field of view, direction of view and eyepiece to suit an almost infinite range of inspection tasks.

## The basic system is comprised of the following:

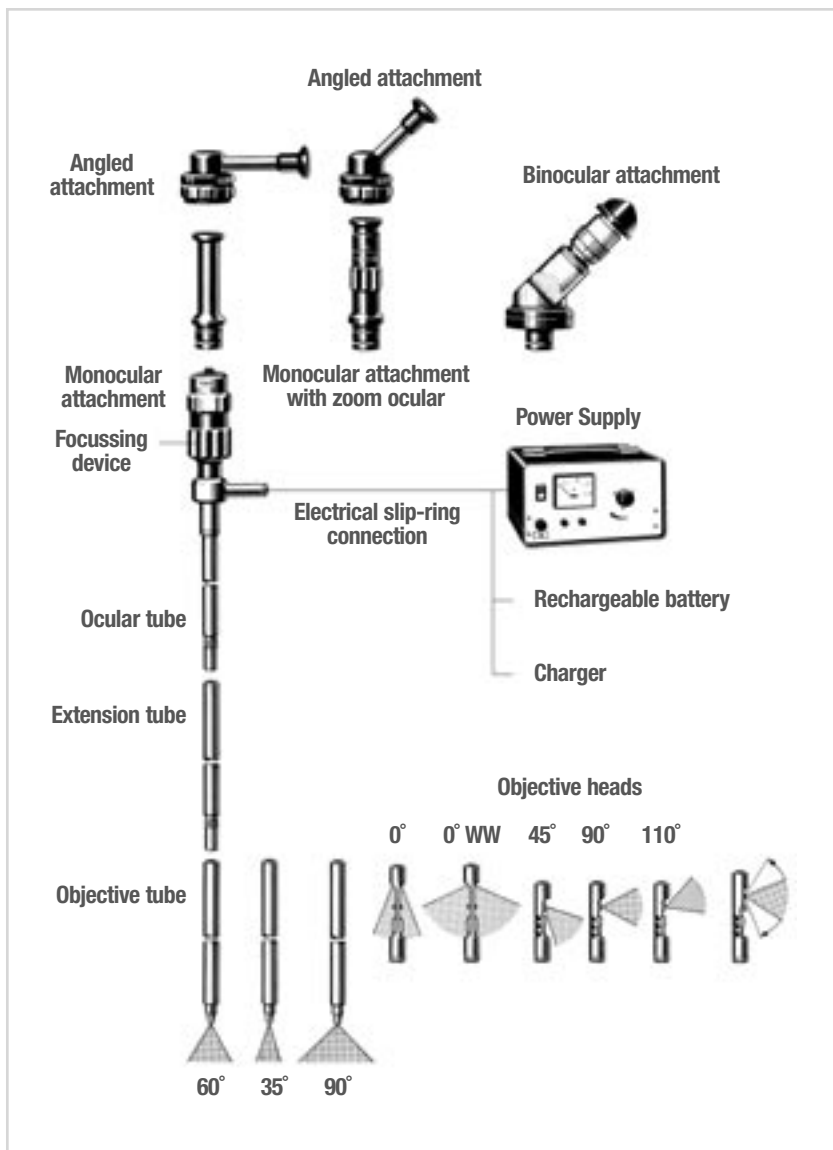
- Ocular tube with monocular attachment
- Objective tube, as required
- Connecting cable
- Power supply (transformer/rechargeable battery)
- Objective head (purchased separately)

Depending on the nature of inspection, extension tubes can be added to the basic system to produce an endoscope of the required length. These are connected by means of a positive square-section screw thread. It is possible to use the instrument suspended in a vertical position. The power is supplied by a variable output transformer operating from AC power or from a sealed rechargeable battery pack.



## Technical features

- Diameters: 14 mm (0.55 in.), 18 mm (0.71 in.) or 24 mm (0.94 in.)
- Working lengths 500 mm (20 in.) to 30,000 mm (1181 in.), depending on the diameter of the endoscope
- Interchangeable objective heads with directions of view 0°, 0° wide angle, 45°, 90° and 110°, universal objective head with adjustable prism, special objective heads according to inspection requirement
- Extension tubes 500 mm (20 in.) to 1500 mm (59 in.), depending on the diameter of the endoscope
- Interchangeable ocular attachments: Monocular, zoomocular, binocular
- Stainless steel outer tubes, temperature resistant up to 120° C (248° F)
- All instruments are available water-proof and gas-tight
- Radiation resistant versions are available



## » Extendable Endoscopes with Lamp Illumination 14 mm (0.55 in.) $\varnothing$

### REX14-100 - Basic Equipment, working length 100.0 cm (39.4 in.)

Ocular tube with monocular attachment, working length 10.0 cm (3.9 in.)

Objective tube, angle of field 60°, working length 90.0 cm (35.4 in.)

Connecting cable, 500.0 cm (196.9 in.), with switch

Transformer 110V/1-15V adjustable

Carrying case for complete set

### Objective Heads with Halogen Lamps

Objective head, 0° with halogen lamp 12 V / 20 W - E14-000-60

Objective head, 0° wide angle with halogen lamp 12 V / 20 W - E14-000-90

Objective head, 45° with halogen lamp 12 V / 20 W - E14-045-60

Objective head, 90° with halogen lamp 12 V / 20 W - E14-90-60

Objective head, 110° with halogen lamp 12 V / 20 W - E14-110-60

Universal objective head with adjustable prism - E14-VAR

### Accessories and Spare Parts

Objective tube, angle of field 60°, working length 40.0 cm (15.7 in.) - E14-0400-0BJ

Extension tube, working length 100.0 cm (39.4 in.) - E14-1000

Extension tube, working length 50.0 cm (19.7 in.) - E14-0500

Angled attachment, angulated 90°, working length 30.0 cm (11.8 in.) - RAE-90-300

Angled attachment, angulated 90°, working length 11.5 cm (4.5 in.) - RAE-90-115

Angled attachment, angulated 45°, working length 11.5 cm (4.5 in.) - RAE-45-115

Binocular attachment, rotatable - EB-000

Monocular attachment with zoom ocular - EM-000

Halogen lamp 12 V / 20 W, with fitting - SPL-20

Special type halogen lamp 12 V / 55 W, with fitting - SPL-55

Transformer 220 V / 1-15 V adjustable - E220-XFMR

Transformer 110 V / 1-15 V adjustable - TRANSFORMER

Rechargeable battery 12 V / 10 Ah complete in leather carrying case - EXT-BATTERY

Charger 12 V complete - EXT-CHARGER

## » Extendable Endoscopes with Lamp Illumination 18 mm (0.71 in.) $\varnothing$

### REX18-100 - Basic Equipment, working length 100.0 cm (39.4 in.)

Ocular tube with monocular attachment, working length 10.0 cm (3.9 in.)

Objective tube, angle of field 60°, working length 90.0 cm (35.4 in.)

Connecting cable, 500.0 cm (196.9 in.), with switch

Transformer 110V/1-15 adjustable

Carrying case for complete set

### Objective Heads with Halogen Lamps

Objective head, 0° with halogen lamp 12 V / 20 W - E18-000-60

Objective head, 0° wide angle with halogen lamp 12 V / 20 W - E18-000-90

Objective head, 45° with halogen lamp 12 V / 20 W - E18-045-60

Objective head, 90° with halogen lamp 12 V / 20 W - E18-090-60

Objective head, 110° with halogen lamp 12 V / 20 W - E18-110-60

Universal objective head with adjustable prism - E18-VAR

### Accessories and Spare Parts

Objective tube, angle of field 60°, working length 40.0 cm (15.7 in.) - E18-0400-0BJ

Extension tube, working length 100.0 cm (39.4 in.) - E18-1000T

Extension tube, working length 50.0 cm (19.7 in.) - E18-0500T

Angled attachment, angulated 90°, working length 30.0 cm (11.0 in.) - RAE90-300

Angled attachment, angulated 90°, working length 15.0 cm (4.5 in.) - RAE90-115

Angled attachment, angulated 45°, working length 15.0 cm (4.5 in.) - RAE45-115

Binocular attachment, rotatable - EB-000

Monocular attachment with zoom ocular - EM-000

Halogen lamp 12 V / 20 W, with fitting - SPL-20

Halogen lamp 12 V / 100 W - SPL-100

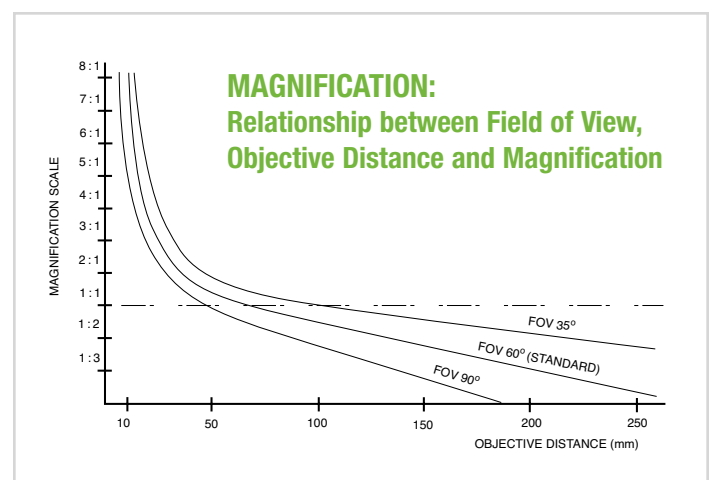
Special type halogen lamp 15 V / 150 W - SPL-150

Transformer 220 V / 1-15 V adjustable - E220-XFMR

Transformer 110 V / 1-15 V adjustable - TRANSFORMER

Rechargeable battery 12 V / 10 Ah complete in leather carrying case - EXT-BATTERY

Charger 12 V complete - EXT-CHARGER



## » Extendable Endoscopes with Lamp Illumination 24 mm (0.94 in.) $\phi$

### REX24-160 - Basic Equipment, working length 160.0 cm (63.0 in.)

Ocular tube with monocular attachment, working length 30.0 cm (11.8 in.)

Objective tube, angle of field 60°, working length 130.0 cm (51.2 in.)

Connecting cable, 500.0 cm (196.9 in.), with switch

Transformer 110 V / 1–15 V adjustable

Carrying case for complete set

### Objective Heads with Halogen Lamps

Objective head, 0° with halogen lamp 12 V / 100 W - E24-000-60

Objective head, 0° wide angle with halogen lamp 12 V / 100 W - E24-000-90

Objective head, 45° with halogen lamp 12 V / 100 W - E24-045-60

Objective head, 90° with halogen lamp 12 V / 100 W - E24-090-60

Objective head, 110° with halogen lamp 12 V / 100 W - E24-110-60

Universal objective head with adjustable prism - E24-VAR

### Accessories and Spare Parts

Objective tube, angle of field 60°, working length 55.0 cm (21.6 in.) - E24-0550-0BJ

Extension tube, working length 150.0 cm (59.0 in.) - E24-1500T

Extension tube, working length 75.0 cm (29.5 in.) - E24-0750T

Angled attachment, angulated 90°, working length 35.0 cm (13.8 in.) - RAE90-300

Angled attachment, angulated 90°, working length 10.0 cm (3.9 in.) - RAE90-115

Angled attachment, angulated 45°, working length 35.0 cm (13.8 in.) - RAE45-300

Angled attachment, angulated 45°, working length 10.0 cm (3.9 in.) - RAE45-115

Binocular attachment, rotatable - EB-000

Monocular attachment with zoom ocular - EM-000

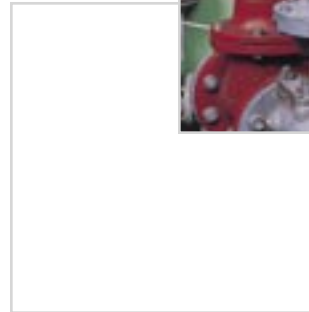
Halogen lamp 12 V / 20 W - SPL-100

Transformer 220 V / 1–15 V adjustable - E220-XFMR

Transformer 110 V / 1–15 V adjustable - TRANSFORMER

Rechargeable battery 12 V / 10 Ah complete in leather carrying case - EXT-BATTERY

Charger 12 V complete - EXT-CHARGER



To schedule a product demonstration or to find out more, call us at 888-332-EVIT(3848) or 973-448-0077 or visit [www.everestvit.com](http://www.everestvit.com).



### ABOUT EVEREST VIT

Everest VIT is the industry leader in the development, sales, rental, training and on-site service of Remote Visual Inspection (RVI) equipment. RVI provides viewing capabilities from a remote location, enabling companies around the world to inspect machinery, facilities and infrastructure in the safest, quickest and most cost-effective manner possible. Everest VIT's innovative products have been used to streamline the inspection process in all industries where safety, security and accuracy are of paramount concern, such as aviation, power generation, processing, manufacturing, law enforcement and infrastructure.

[www.everestvit.com](http://www.everestvit.com)

Equipment Sales: **888-332-EVIT (3848)** • Rentals & Inspection Services: **800-979-24X7 (2497)**  
Direct: 973-448-0077 • Fax: 973-448-0044 • Locations around the world