

VISIOPROBE

COMPACT CAMERAS FOR REMOTE VISUAL INSPECTION



www.visioprobe.com

VISIOPROBE

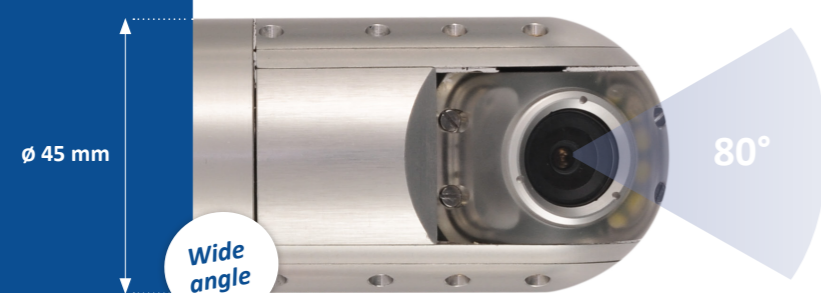
Visioprobe is a unique system consisting of cameras, a control unit and mobility tools. Based on years of client feedback, it has been designed for industry and features several patented innovations. Visioprobe camera heads are among the most compact and robust, without compromising image quality.



PAN AND TILT CAMERA HEAD



Macro



Wide angle



45 mm | only 400 g diameter with variable focus

CAMERAS

Only 45 mm in diameter, but with all Pan & Tilt features. Visioprobe cameras are easy to use, waterproof up to 2 bars and highly robust (an outer shell in aluminium or stainless steel for contaminated environments, sapphire lens). They adapt to your needs and are very durable.

The powerful LED Lights can be manually adjusted. They have been designed to prevent reflections or overexposure issues. With manual focus, from 5 mm to infinity, you get a perfect image in any situation.

Two versions for one product: macro for detailed surface analysis, or wide view when it comes to standard visual inspection.

Top quality, Robust, Plug & Play

Visioprobe cameras set the standard in industrial endoscopy



CONTROL UNIT

A user-friendly interface with a touch screen and simple menus.

Whether you want to take photos or record video (or both at the same time), include text, or navigate in the library, everything is at your fingertips. There is no confusion possible.

Cameras are controlled with a joystick for intuitive and precise movements.

Share your work with colleagues in real-time or once the inspection is over using the video port or the USB port.

REELS, POLES

Reels and poles have been designed especially for your industrial environment, based on years of customer experience.

Telescopic poles are the answer for straight and short distance inspections. For long distance inspections with bends, use our set of push rods with various lengths and diameters.



Reels

Telescopic Poles

SERVICES

- Warranty extension
- Annual preventive maintenance
- Repair rebate program
- Equipment backup

ACCESSORIES

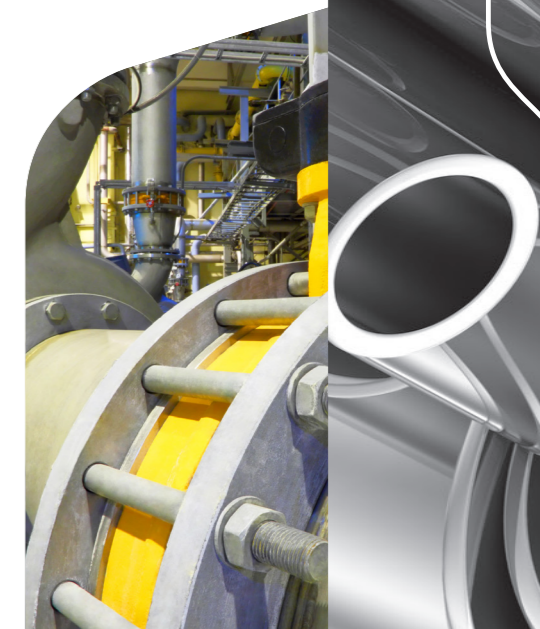
- Neck belt (included)
- Fixing kit (included)
- Anti-glare sun shade
- Centering sleeves
- Clamps and articulated arms

KEY FEATURES

- Compact, plug & play
- Real-time estimate of tip to target distance with camera focus
- Light intensity adjustment
- Change camera head without rebooting
- 4-hr battery autonomy
- Compact case

OPTIONS

- Completely stainless steel camera for contaminated environments
- LED monitoring per quarter
- External battery or 12V cable
- Case with trolley
- Centering sleeves upon request



CAMERAS

Reference	VP CAM 325	VP CAM 345R	VP CAM 345RMP	VP CAM 345RMP 30
Diameter	25 mm	45 mm	45 mm	45 mm
Length	190 mm; flexible	145 mm	145 mm	145 mm
Weight	0.07 kg	0.4 kg	0.4 kg	0.4 kg
Camera head	Aluminum alloy	Aluminum alloy	Aluminum alloy	Aluminum alloy
Sensor	CMOS 1/4" ; 0.025 Lux ; 480LTV ; Auto shutter	CMOS 1/4" ; 0.025 Lux ; 480LTV ; Auto/manual shutter	CMOS 1/4" ; 0.025 Lux ; 480LTV ; Auto/manual shutter	CMOS 1/4" ; 0.025 Lux ; 480LTV ; Auto/manual shutter
Focal length	2.45 mm	2.45 mm	2.6 mm	7.5 mm
Field of view	80°	80°	80°	30°
Focus range	focus 50 mm to infinity	fixed focus 50 mm to infinity	focus 5 mm to infinity	focus 8 mm to infinity
Lighting	9 LEDs	12 LEDs	24 LEDs	24 LEDs
Pan and Tilt	no	Pan: 360° infinitely Tilt: -110° to +110°	Pan: 360° infinitely Tilt: -110° to +110°	Pan: 360° infinitely Tilt: -110° to +110°
Shield window	sapphire	sapphire	sapphire	sapphire
Waterproof	2 bar	2 bar	2 bar	2 bar
Pipe range	from DN 40	from DN 100	from DN 100	from DN 100
Operating temperature	-30°C to +65°C	-30°C to +65°C	-30°C to +65°C	-30°C to +65°C

CONTROL UNIT

Reference	VP BAI300
Screen	LCD Tactile 7"
Body	Ultra resistant polycarbonate
Autonomy	4 hours
Power	Sector adaptor 110 - 230 V / 12 V DC
Control	Joystick
Light intensity adjustment	Manual
Information on screen	Electronic meter count, battery level, time, push rod length, text overlay
Data storage	USB key
Data format	Jpeg / mpeg4
Video output	BNC PAL
Weight	2 kg

PUSH RODS

Reference	VP DEV330 D6	VP DEV330 D8	VP DEV360
Reference	VP DEV330 D6	VP DEV330 D8	VP DEV360
Push rod diameter	6 mm	8 mm	8 mm
Push rod length	30 m	30 m	60 m
Bend radius	100 mm	170 mm	170 mm
Meter count	Electronic	Electronic	Electronic
Braking system	Clamp ring	Clamp ring	Clamp ring
Control unit fixing hole	1	1	2
Dimension	490 x 214 x 530 mm	490 x 214 x 530 mm	680 x 310 x 735 mm
Weight	8.6 kg	9.6 kg	18.4 kg

STORAGE CASE

Reference	VP VAL300
Dimension	520 x 435 x 230 mm
Material	Unbreakable copolymer polypropylene
Weight (with internal foam)	5.65 kg

A product from:

FORETEC
ACCESS SEE CONTROL

Sold by:



Crimson Industrial Vision

Tel: +44 (0)1892 539 503

email: info@crimsoniv.co.uk

web: www.crimsoniv.co.uk