

Unit 11, Whitemyres Business Centre  
Whitemyres Avenue  
Aberdeen, AB16 6HQ  
Tel. +44 (0)1224 789692  
Fax. +44 (0)1224 789462  
Web. @www.inspectahire.com

**INSPECTAHIRE**

INSTRUMENT  
COMPANY LTD

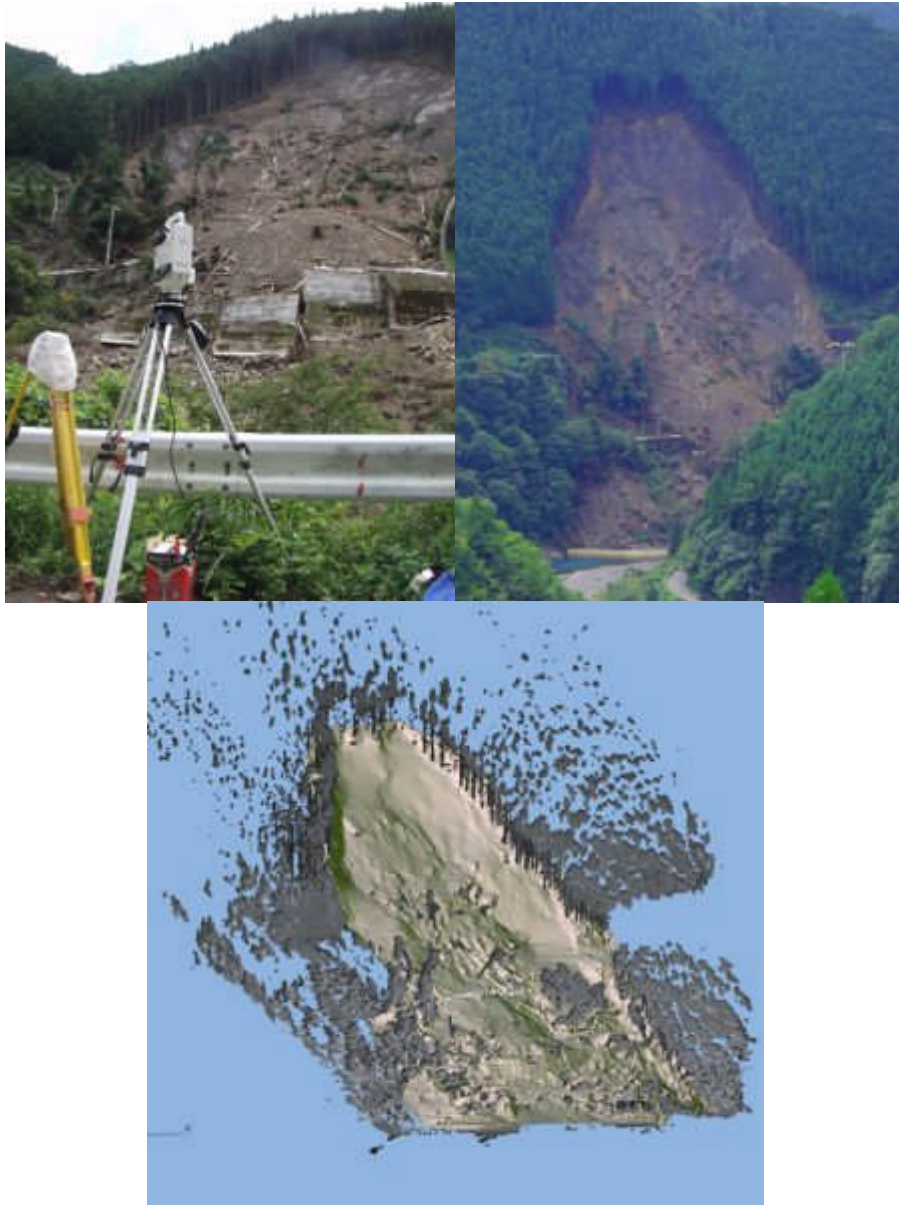
## Combined Total Station & Point Cloud Scanner



MDL's LaserAce® Scanner is the rugged field instrument, which combines reflectorless laser 'Point and Shoot' measurement technology with high speed laser scanning.

LaserAce® Scanner can measure up to 2300ft/ 700m without a reflective target and stores up to 32mb of data (3 million points) on a standard compact flash card. Additional flash cards can be inserted if more points are required. The use of flash cards eliminates the need for any external PC or control computers. Remote control via PC is available if required.

The instrument has a numeric keyboard, which allows for a very flexible coding system when surveying individual features. Observations can be made manually, at a given separation or as a point cloud. Areas to be observed can be selected by rectangle or polygon, and all observations are assigned to separate layers in the post-processing software.



The unit is one-man portable and requires no external computer or data loggers. The user also benefits as he/ she can survey dangerous and inaccessible areas safely due to the scanners long range ability.

*Recommended & used by the University of Durham, UK for landslide surveys throughout the world.*