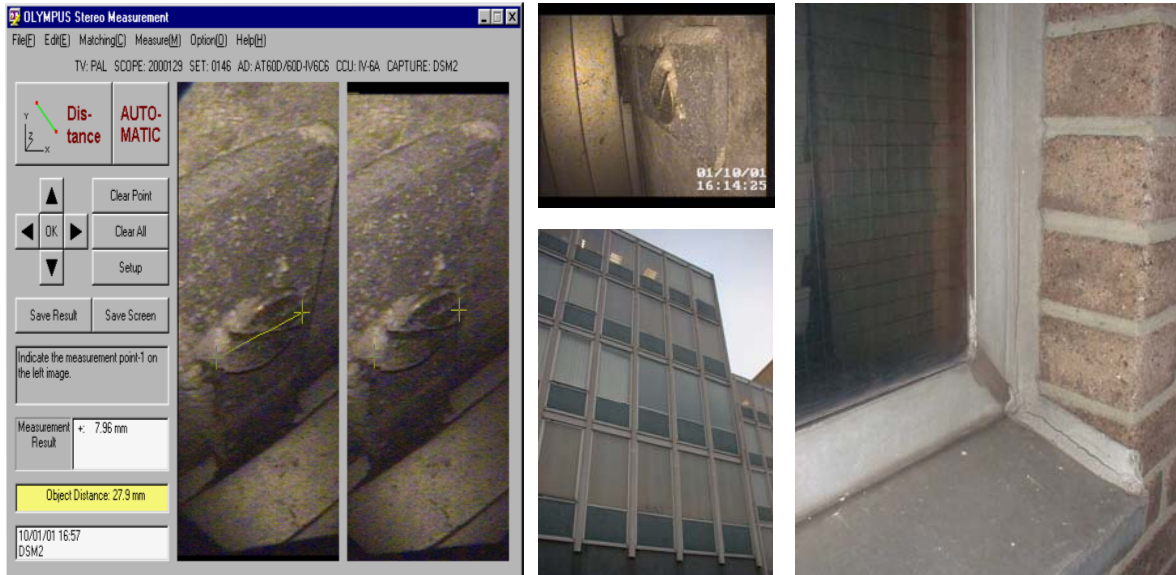


INSPECTAHIRE INSTRUMENT COMPANY LIMITED SITE PROJECT— INFORMATION SHEET

CLADDING INVESTIGATION



Survey Inspection of External Cladding Envelope

The external face of a building is important for many different reasons, it is the first line of defence against the elements, it is the first impression that people can get about the work being done here, about the people that do the work. It is a very important first impression. If the cladding envelope is not maintained, small and minor defects can quickly require serious and expensive remedies, and give the wrong impression to visitors or clients.

A typical inspection of an external envelope, can show cracked and delaminated mastic joints and sealing, which are no longer weather proof, loose and missing tiles, which leave openings for water to penetrate through, damage to the cladding framework that can lead to instability within the structure, and misalignment of framework elements indicating movement of panels or frame.

On this site we were able to carry out an investigation of the cavity behind the internal cladding panel, so that using a digital imagescope introduced through a 10 mm drilled hole, the type, size and position and the panel fixing, could be accurately measured using stereoscopic imaging, with minimum disruption to occupants. This helped the designers to understand how the curtain wall system framed the building, so they could come up with a replacement design that fitted within the local planning requirements.

This was carried out over a lunch break period, with no loss of office work time.